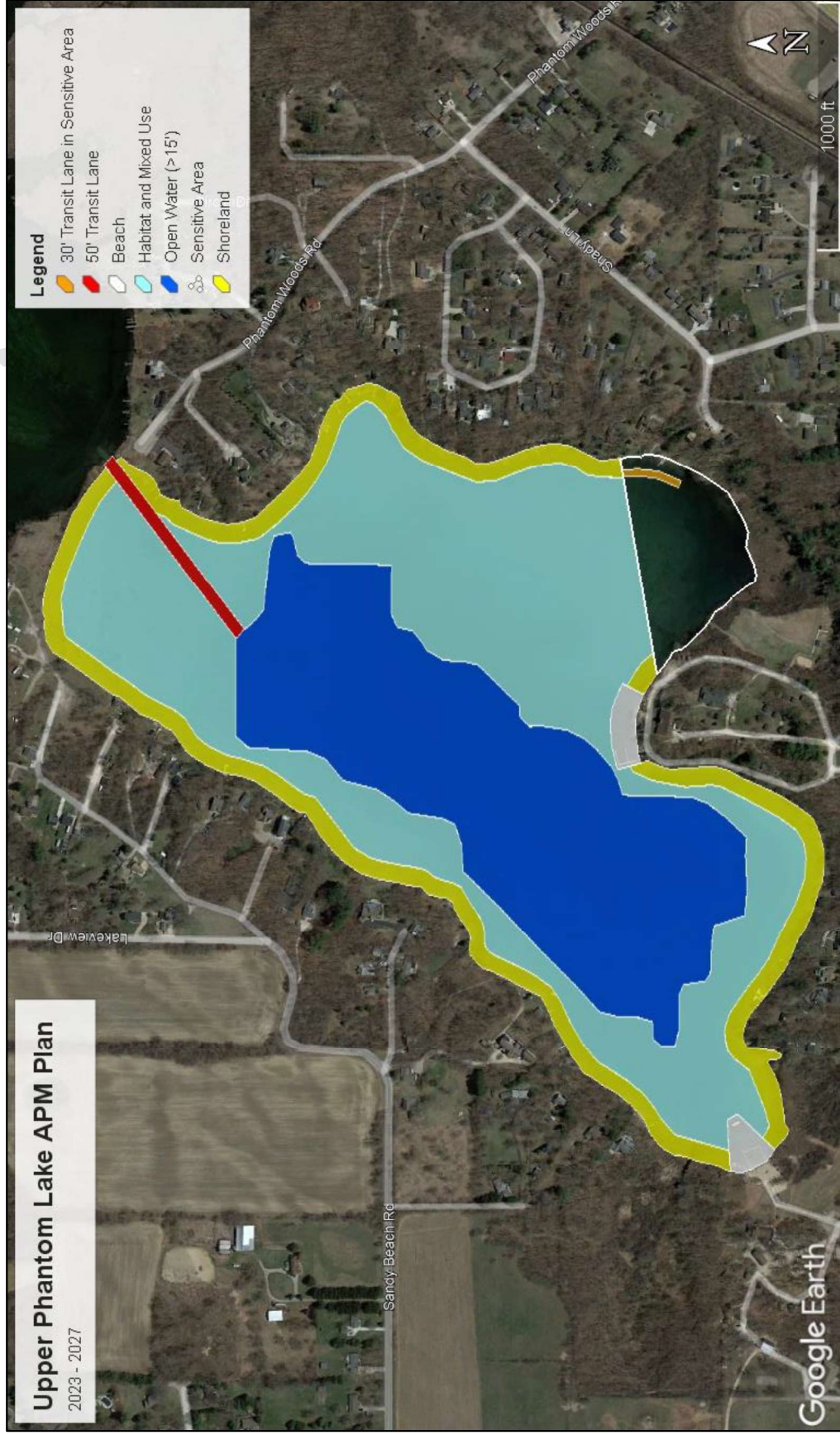


Figure 56: Recommended Aquatic Plant Management Plan for Upper Phantom Lake



SOURCE: Lake and Pond Solutions, LLC (2023)

*\*The extent of implementation among these areas will depend on available staff, time, budget, and plant growth each season. Management area sizes and locations have been scaled appropriately. Refer to Page 68 for specific descriptions of the management areas as they relate to harvesting and Page 78 for herbicide treatments.*